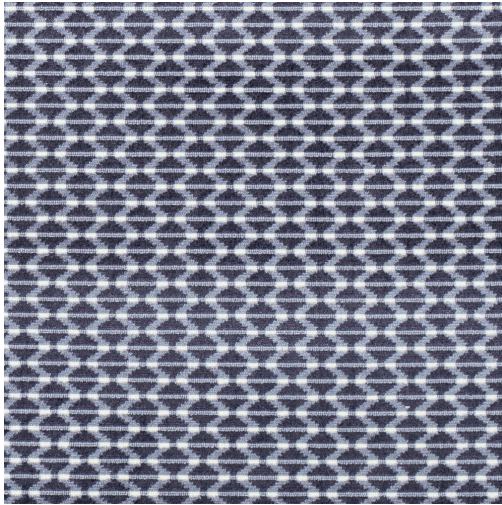


Marathon Harbor



Scan for inventory
& more information



Durability	Exceeds 60,000 Wyzenbeek Double Rubs
Width	54"
Content	51% Viscose, 32% Polyester, 17% Cotton
Pattern Direction	Up The Roll
Repeat	Horizontal 1.5" x Vertical .75"
Flammability	CA 117-E, UFAC Class 1, NFPA 260
Eco Friendly	PFAS Free
Applications	Upholstery
Markets	Home & Contract
Origin	India
Cleanability	Solvent Based
Sample Books	Azure