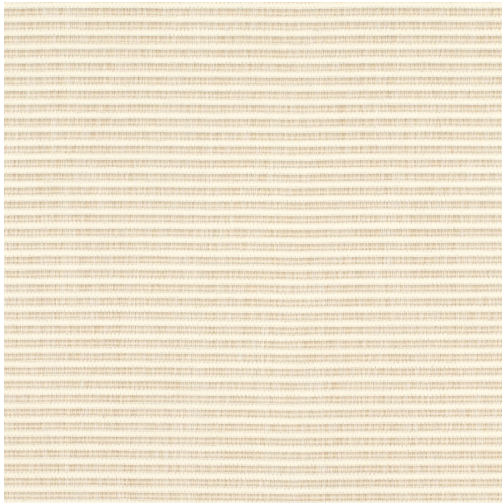


Maria Beach



Scan for inventory
& more information



Durability	Exceeds 30,000 Wyzenbeek Double Rubs
Width	54"
Content	56% Polyester, 44% Cotton - Backing: Acrylic
Pattern Direction	Up The Roll
Repeat	Vertical .5"
Flammability	CA 117-E, UFAC Class 1, NFPA 260
Eco Friendly	PFAS Free
Applications	Upholstery
Markets	Home & Contract
Origin	Turkey
Cleanability	Water or Solvent Based
Sample Books	Cottonwood